

SV Steinmühle

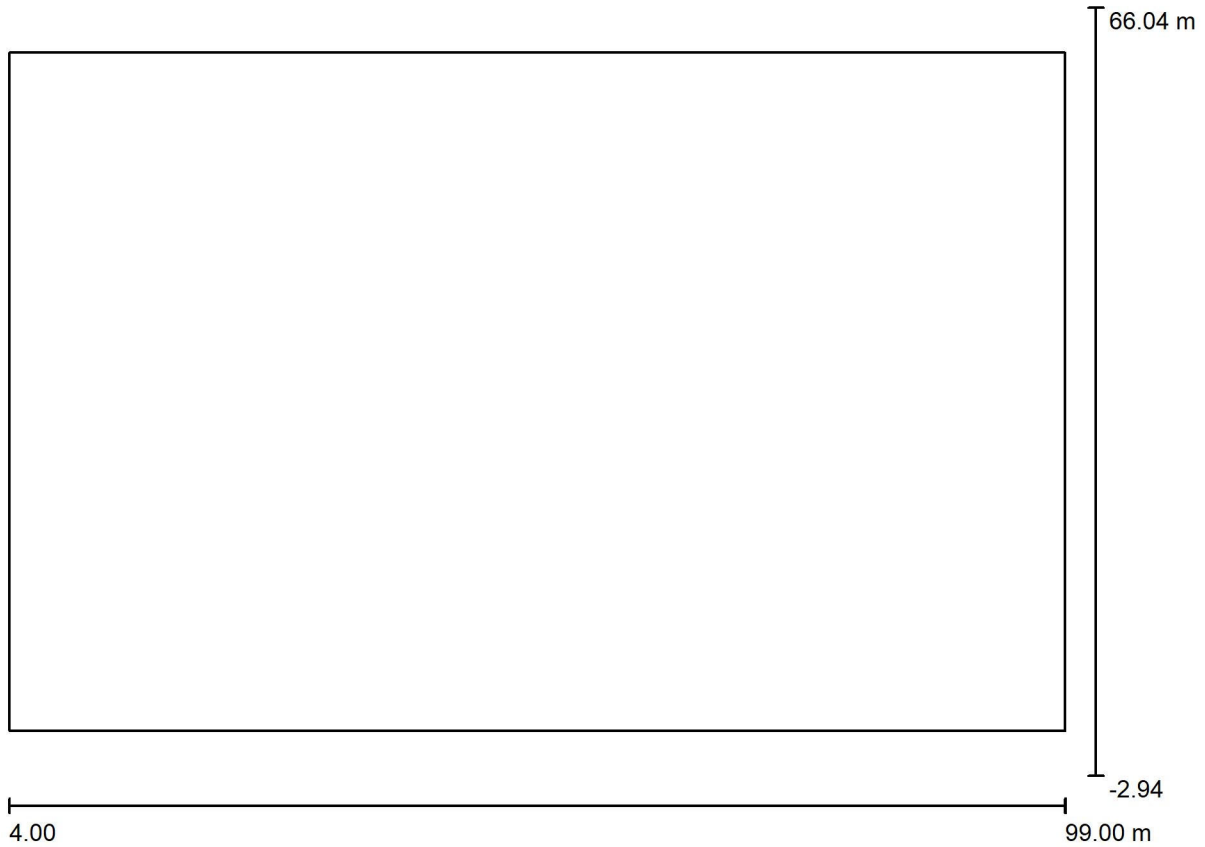
Partner for Contact:
Order No.:
Company:
Customer No.:

Datum: 16.11.2022
Bearbeiter(in):



Bearbeiter(in)
 Telefon
 Fax
 e-Mail

Hauptplatz / Planungsdaten



Wartungsfaktor: 1.00, ULR (Upward Light Ratio): 9.5%

Maßstab 1:680

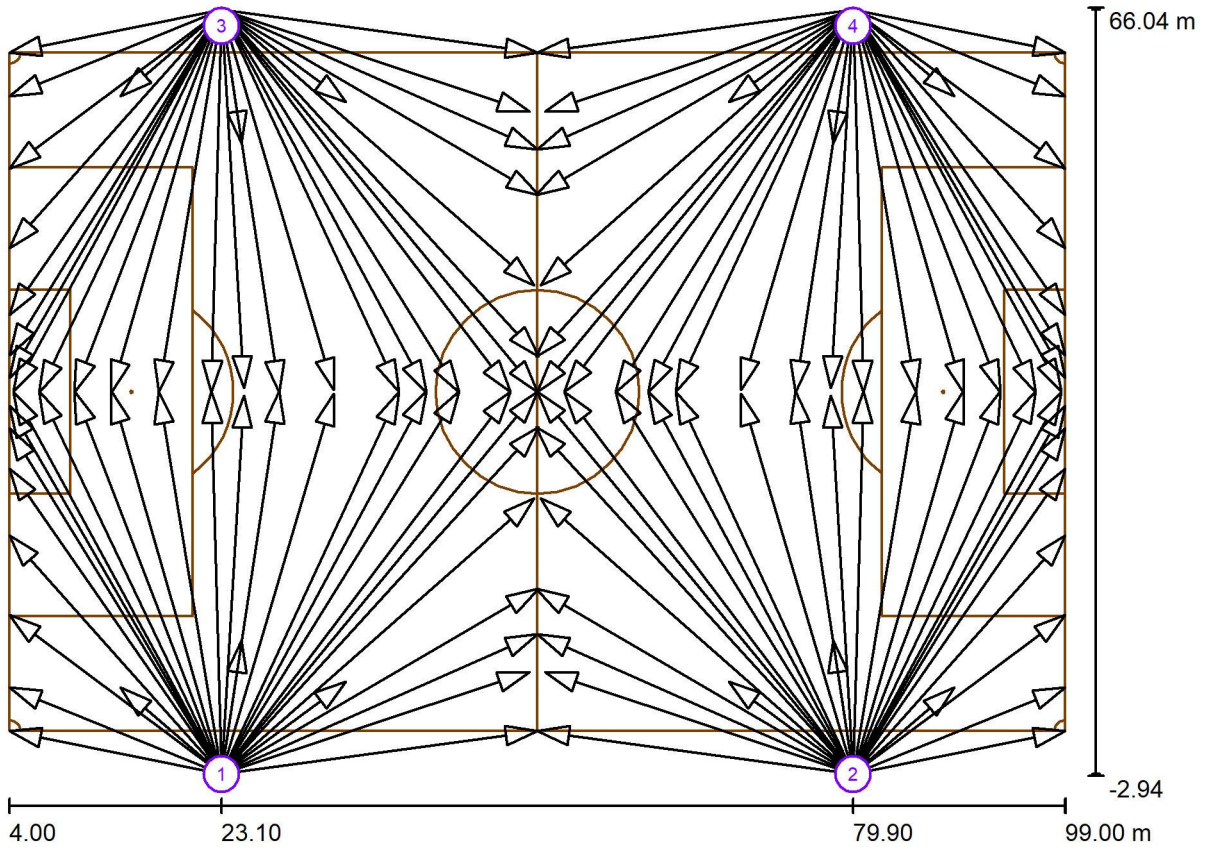
Leuchten-Stückliste

| Nr. | Stück | Bezeichnung (Korrekturfaktor) | Φ (Leuchte) [lm] | Φ (Lampen) [lm] | P [W] |
|---------|-------|-------------------------------|------------------|-----------------|---------|
| 1 | 120 | E-100W-1MODULES-25D (1.000) | 12578 | 12587 | 97.8 |
| Gesamt: | | | 1509403 | Gesamt: 1510447 | 11736.0 |



Bearbeiter(in)
 Telefon
 Fax
 e-Mail

Hauptplatz / Sportleuchten (Koordinatenliste)



Maßstab 1 : 680

Liste der Sportleuchten

| Leuchte | Index | Position [m] | | | Anstrahlpunkt [m] | | | | Anstrahlwinkel [°] | Ausrichtung | Mast |
|---------------------|-------|--------------|--------|--------|-------------------|--------|-------|------|--------------------|-------------|------|
| | | X | Y | Z | X | Y | Z | | | | |
| E-100W-1MODULES-25D | 1 | 23.100 | -2.800 | 16.175 | 51.600 | 28.400 | 0.000 | 20.9 | (C 90, G IMax) | / | |
| E-100W-1MODULES-25D | 1 | 23.100 | -2.800 | 16.175 | 4.000 | 11.489 | 0.000 | 34.1 | (C 90, G IMax) | / | |
| E-100W-1MODULES-25D | 1 | 23.100 | -2.800 | 16.175 | 39.044 | 31.549 | 0.000 | 23.1 | (C 90, G IMax) | / | |
| E-100W-1MODULES-25D | 1 | 23.100 | -2.800 | 16.175 | 49.062 | 31.550 | 0.000 | 20.6 | (C 90, G IMax) | / | |

Bearbeiter(in)
Telefon
Fax
e-Mail

Hauptplatz / Sportleuchten (Koordinatenliste)

Liste der Sportleuchten

| Leuchte | Index | Position [m] | | | Anstrahlpunkt [m] | | | Anstrahlwinkel [°] | Ausrichtung | Mast |
|---------------------|-------|--------------|--------|--------|-------------------|--------|-------|--------------------|----------------|------|
| | | X | Y | Z | X | Y | Z | | | |
| E-100W-1MODULES-25D | 1 | 23.100 | -2.800 | 16.175 | 34.300 | 5.500 | 0.000 | 49.2 | (C 90, G IMax) | / |
| E-100W-1MODULES-25D | 1 | 23.100 | -2.800 | 16.175 | 6.698 | 31.600 | 0.000 | 23.0 | (C 90, G IMax) | / |
| E-100W-1MODULES-25D | 1 | 23.100 | -2.800 | 16.175 | 4.000 | 30.299 | 0.000 | 22.9 | (C 90, G IMax) | / |
| E-100W-1MODULES-25D | 1 | 23.100 | -2.800 | 16.175 | 33.193 | 31.400 | 0.000 | 24.4 | (C 90, G IMax) | / |
| E-100W-1MODULES-25D | 1 | 23.100 | -2.800 | 16.175 | 4.000 | 5.002 | 0.000 | 38.1 | (C 90, G IMax) | / |
| E-100W-1MODULES-25D | 1 | 23.100 | -2.800 | 16.175 | 4.000 | 24.647 | 0.000 | 25.8 | (C 90, G IMax) | / |
| E-100W-1MODULES-25D | 1 | 23.100 | -2.800 | 16.175 | 14.014 | 5.000 | 0.000 | 53.5 | (C 90, G IMax) | / |
| E-100W-1MODULES-25D | 1 | 23.100 | -2.800 | 16.175 | 51.200 | 22.000 | 0.000 | 23.3 | (C 90, G IMax) | / |
| E-100W-1MODULES-25D | 1 | 23.100 | -2.800 | 16.175 | 51.500 | 1.050 | 0.000 | 29.4 | (C 90, G IMax) | / |
| E-100W-1MODULES-25D | 1 | 23.100 | -2.800 | 16.175 | 50.800 | 6.400 | 0.000 | 29.0 | (C 90, G IMax) | / |
| E-100W-1MODULES-25D | 1 | 23.100 | -2.800 | 16.175 | 4.000 | 1.050 | 0.000 | 39.7 | (C 90, G IMax) | / |
| E-100W-1MODULES-25D | 1 | 23.100 | -2.800 | 16.175 | 51.600 | 13.860 | 0.000 | 26.1 | (C 90, G IMax) | / |
| E-100W-1MODULES-25D | 1 | 23.100 | -2.800 | 16.175 | 4.381 | 31.500 | 0.000 | 22.5 | (C 90, G IMax) | / |
| E-100W-1MODULES-25D | 1 | 23.100 | -2.800 | 16.175 | 51.500 | 9.800 | 0.000 | 27.5 | (C 90, G IMax) | / |
| E-100W-1MODULES-25D | 1 | 23.100 | -2.800 | 16.175 | 4.000 | 18.624 | 0.000 | 29.4 | (C 90, G IMax) | / |
| E-100W-1MODULES-25D | 1 | 23.100 | -2.800 | 16.175 | 44.452 | 31.600 | 0.000 | 21.8 | (C 90, G IMax) | / |
| E-100W-1MODULES-25D | 1 | 23.100 | -2.800 | 16.175 | 51.500 | 31.550 | 0.000 | 19.9 | (C 90, G IMax) | / |
| E-100W-1MODULES-25D | 1 | 23.100 | -2.800 | 16.175 | 17.447 | 31.550 | 0.000 | 24.9 | (C 90, G IMax) | / |
| E-100W-1MODULES-25D | 1 | 23.100 | -2.800 | 16.175 | 22.172 | 31.600 | 0.000 | 25.2 | (C 90, G IMax) | / |
| E-100W-1MODULES-25D | 1 | 23.100 | -2.800 | 16.175 | 28.288 | 31.600 | 0.000 | 24.9 | (C 90, G IMax) | / |
| E-100W-1MODULES-25D | 1 | 23.100 | -2.800 | 16.175 | 25.100 | 31.200 | 0.000 | 25.4 | (C 90, G IMax) | / |
| E-100W-1MODULES-25D | 1 | 23.100 | -2.800 | 16.175 | 41.539 | 31.600 | 0.000 | 22.5 | (C 90, G IMax) | / |
| E-100W-1MODULES-25D | 1 | 23.100 | -2.800 | 16.175 | 4.000 | 28.260 | 0.000 | 23.9 | (C 90, G IMax) | / |
| E-100W-1MODULES-25D | 1 | 23.100 | -2.800 | 16.175 | 24.900 | 9.200 | 0.000 | 53.1 | (C 90, G IMax) | / |
| E-100W-1MODULES-25D | 1 | 23.100 | -2.800 | 16.175 | 13.184 | 31.600 | 0.000 | 24.3 | (C 90, G IMax) | / |
| E-100W-1MODULES-25D | 1 | 23.100 | -2.800 | 16.175 | 9.848 | 31.600 | 0.000 | 23.7 | (C 90, G IMax) | / |
| E-100W-1MODULES-25D | 2 | 79.900 | -2.800 | 16.175 | 51.400 | 28.400 | 0.000 | 20.9 | (C 90, G IMax) | / |
| E-100W-1MODULES-25D | 2 | 79.900 | -2.800 | 16.175 | 99.000 | 11.489 | 0.000 | 34.1 | (C 90, G IMax) | / |
| E-100W-1MODULES-25D | 2 | 79.900 | -2.800 | 16.175 | 63.956 | 31.549 | 0.000 | 23.1 | (C 90, G IMax) | / |
| E-100W-1MODULES-25D | 2 | 79.900 | -2.800 | 16.175 | 53.938 | 31.550 | 0.000 | 20.6 | (C 90, G IMax) | / |
| E-100W-1MODULES-25D | 2 | 79.900 | -2.800 | 16.175 | 68.700 | 5.500 | 0.000 | 49.2 | (C 90, G IMax) | / |
| E-100W-1MODULES-25D | 2 | 79.900 | -2.800 | 16.175 | 96.302 | 31.600 | 0.000 | 23.0 | (C 90, G IMax) | / |
| E-100W-1MODULES-25D | 2 | 79.900 | -2.800 | 16.175 | 99.000 | 30.299 | 0.000 | 22.9 | (C 90, G IMax) | / |
| E-100W-1MODULES-25D | 2 | 79.900 | -2.800 | 16.175 | 69.807 | 31.400 | 0.000 | 24.4 | (C 90, G IMax) | / |
| E-100W-1MODULES-25D | 2 | 79.900 | -2.800 | 16.175 | 99.000 | 5.002 | 0.000 | 38.1 | (C 90, G IMax) | / |
| E-100W-1MODULES-25D | 2 | 79.900 | -2.800 | 16.175 | 99.000 | 24.647 | 0.000 | 25.8 | (C 90, G IMax) | / |

Bearbeiter(in)
Telefon
Fax
e-Mail

Hauptplatz / Sportleuchten (Koordinatenliste)

Liste der Sportleuchten

| Leuchte | Index | Position [m] | | | Anstrahlpunkt [m] | | | Anstrahlwinkel [°] | Ausrichtung | Mast |
|---------------------|-------|--------------|--------|--------|-------------------|--------|-------|--------------------|----------------|------|
| | | X | Y | Z | X | Y | Z | | | |
| E-100W-1MODULES-25D | 2 | 79.900 | -2.800 | 16.175 | 88.986 | 5.000 | 0.000 | 53.5 | (C 90, G IMax) | / |
| E-100W-1MODULES-25D | 2 | 79.900 | -2.800 | 16.175 | 51.800 | 22.000 | 0.000 | 23.3 | (C 90, G IMax) | / |
| E-100W-1MODULES-25D | 2 | 79.900 | -2.800 | 16.175 | 51.500 | 1.050 | 0.000 | 29.4 | (C 90, G IMax) | / |
| E-100W-1MODULES-25D | 2 | 79.900 | -2.800 | 16.175 | 52.200 | 6.400 | 0.000 | 29.0 | (C 90, G IMax) | / |
| E-100W-1MODULES-25D | 2 | 79.900 | -2.800 | 16.175 | 99.000 | 1.050 | 0.000 | 39.7 | (C 90, G IMax) | / |
| E-100W-1MODULES-25D | 2 | 79.900 | -2.800 | 16.175 | 51.400 | 13.860 | 0.000 | 26.1 | (C 90, G IMax) | / |
| E-100W-1MODULES-25D | 2 | 79.900 | -2.800 | 16.175 | 98.619 | 31.500 | 0.000 | 22.5 | (C 90, G IMax) | / |
| E-100W-1MODULES-25D | 2 | 79.900 | -2.800 | 16.175 | 51.500 | 9.800 | 0.000 | 27.5 | (C 90, G IMax) | / |
| E-100W-1MODULES-25D | 2 | 79.900 | -2.800 | 16.175 | 99.000 | 18.624 | 0.000 | 29.4 | (C 90, G IMax) | / |
| E-100W-1MODULES-25D | 2 | 79.900 | -2.800 | 16.175 | 58.548 | 31.600 | 0.000 | 21.8 | (C 90, G IMax) | / |
| E-100W-1MODULES-25D | 2 | 79.900 | -2.800 | 16.175 | 51.500 | 31.550 | 0.000 | 19.9 | (C 90, G IMax) | / |
| E-100W-1MODULES-25D | 2 | 79.900 | -2.800 | 16.175 | 85.553 | 31.550 | 0.000 | 24.9 | (C 90, G IMax) | / |
| E-100W-1MODULES-25D | 2 | 79.900 | -2.800 | 16.175 | 80.828 | 31.600 | 0.000 | 25.2 | (C 90, G IMax) | / |
| E-100W-1MODULES-25D | 2 | 79.900 | -2.800 | 16.175 | 74.712 | 31.600 | 0.000 | 24.9 | (C 90, G IMax) | / |
| E-100W-1MODULES-25D | 2 | 79.900 | -2.800 | 16.175 | 77.900 | 31.200 | 0.000 | 25.4 | (C 90, G IMax) | / |
| E-100W-1MODULES-25D | 2 | 79.900 | -2.800 | 16.175 | 61.461 | 31.600 | 0.000 | 22.5 | (C 90, G IMax) | / |
| E-100W-1MODULES-25D | 2 | 79.900 | -2.800 | 16.175 | 99.000 | 28.260 | 0.000 | 23.9 | (C 90, G IMax) | / |
| E-100W-1MODULES-25D | 2 | 79.900 | -2.800 | 16.175 | 78.100 | 9.200 | 0.000 | 53.1 | (C 90, G IMax) | / |
| E-100W-1MODULES-25D | 2 | 79.900 | -2.800 | 16.175 | 89.816 | 31.600 | 0.000 | 24.3 | (C 90, G IMax) | / |
| E-100W-1MODULES-25D | 2 | 79.900 | -2.800 | 16.175 | 93.152 | 31.600 | 0.000 | 23.7 | (C 90, G IMax) | / |
| E-100W-1MODULES-25D | 3 | 23.100 | 65.900 | 16.175 | 51.600 | 34.700 | 0.000 | 20.9 | (C 90, G IMax) | / |
| E-100W-1MODULES-25D | 3 | 23.100 | 65.900 | 16.175 | 4.000 | 51.611 | 0.000 | 34.1 | (C 90, G IMax) | / |
| E-100W-1MODULES-25D | 3 | 23.100 | 65.900 | 16.175 | 39.044 | 31.551 | 0.000 | 23.1 | (C 90, G IMax) | / |
| E-100W-1MODULES-25D | 3 | 23.100 | 65.900 | 16.175 | 49.062 | 31.550 | 0.000 | 20.6 | (C 90, G IMax) | / |
| E-100W-1MODULES-25D | 3 | 23.100 | 65.900 | 16.175 | 34.300 | 57.600 | 0.000 | 49.2 | (C 90, G IMax) | / |
| E-100W-1MODULES-25D | 3 | 23.100 | 65.900 | 16.175 | 6.698 | 31.500 | 0.000 | 23.0 | (C 90, G IMax) | / |
| E-100W-1MODULES-25D | 3 | 23.100 | 65.900 | 16.175 | 4.000 | 32.801 | 0.000 | 22.9 | (C 90, G IMax) | / |
| E-100W-1MODULES-25D | 3 | 23.100 | 65.900 | 16.175 | 33.193 | 31.700 | 0.000 | 24.4 | (C 90, G IMax) | / |
| E-100W-1MODULES-25D | 3 | 23.100 | 65.900 | 16.175 | 4.000 | 58.098 | 0.000 | 38.1 | (C 90, G IMax) | / |
| E-100W-1MODULES-25D | 3 | 23.100 | 65.900 | 16.175 | 4.000 | 38.453 | 0.000 | 25.8 | (C 90, G IMax) | / |
| E-100W-1MODULES-25D | 3 | 23.100 | 65.900 | 16.175 | 14.014 | 58.100 | 0.000 | 53.5 | (C 90, G IMax) | / |
| E-100W-1MODULES-25D | 3 | 23.100 | 65.900 | 16.175 | 51.200 | 41.100 | 0.000 | 23.3 | (C 90, G IMax) | / |
| E-100W-1MODULES-25D | 3 | 23.100 | 65.900 | 16.175 | 51.500 | 62.050 | 0.000 | 29.4 | (C 90, G IMax) | / |
| E-100W-1MODULES-25D | 3 | 23.100 | 65.900 | 16.175 | 50.800 | 56.700 | 0.000 | 29.0 | (C 90, G IMax) | / |
| E-100W-1MODULES-25D | 3 | 23.100 | 65.900 | 16.175 | 4.000 | 62.050 | 0.000 | 39.7 | (C 90, G IMax) | / |
| E-100W-1MODULES-25D | 3 | 23.100 | 65.900 | 16.175 | 51.600 | 49.240 | 0.000 | 26.1 | (C 90, G IMax) | / |

Bearbeiter(in)
Telefon
Fax
e-Mail

Hauptplatz / Sportleuchten (Koordinatenliste)

Liste der Sportleuchten

| Leuchte | Index | Position [m] | | | Anstrahlpunkt [m] | | | Anstrahlwinkel [°] | Ausrichtung | Mast |
|---------------------|-------|--------------|--------|--------|-------------------|--------|-------|--------------------|----------------|------|
| | | X | Y | Z | X | Y | Z | | | |
| E-100W-1MODULES-25D | 3 | 23.100 | 65.900 | 16.175 | 4.381 | 31.600 | 0.000 | 22.5 | (C 90, G IMax) | / |
| E-100W-1MODULES-25D | 3 | 23.100 | 65.900 | 16.175 | 51.500 | 53.300 | 0.000 | 27.5 | (C 90, G IMax) | / |
| E-100W-1MODULES-25D | 3 | 23.100 | 65.900 | 16.175 | 4.000 | 44.476 | 0.000 | 29.4 | (C 90, G IMax) | / |
| E-100W-1MODULES-25D | 3 | 23.100 | 65.900 | 16.175 | 44.452 | 31.500 | 0.000 | 21.8 | (C 90, G IMax) | / |
| E-100W-1MODULES-25D | 3 | 23.100 | 65.900 | 16.175 | 51.500 | 31.550 | 0.000 | 19.9 | (C 90, G IMax) | / |
| E-100W-1MODULES-25D | 3 | 23.100 | 65.900 | 16.175 | 17.447 | 31.550 | 0.000 | 24.9 | (C 90, G IMax) | / |
| E-100W-1MODULES-25D | 3 | 23.100 | 65.900 | 16.175 | 22.172 | 31.500 | 0.000 | 25.2 | (C 90, G IMax) | / |
| E-100W-1MODULES-25D | 3 | 23.100 | 65.900 | 16.175 | 28.288 | 31.500 | 0.000 | 24.9 | (C 90, G IMax) | / |
| E-100W-1MODULES-25D | 3 | 23.100 | 65.900 | 16.175 | 25.100 | 31.900 | 0.000 | 25.4 | (C 90, G IMax) | / |
| E-100W-1MODULES-25D | 3 | 23.100 | 65.900 | 16.175 | 41.539 | 31.500 | 0.000 | 22.5 | (C 90, G IMax) | / |
| E-100W-1MODULES-25D | 3 | 23.100 | 65.900 | 16.175 | 4.000 | 34.840 | 0.000 | 23.9 | (C 90, G IMax) | / |
| E-100W-1MODULES-25D | 3 | 23.100 | 65.900 | 16.175 | 24.900 | 53.900 | 0.000 | 53.1 | (C 90, G IMax) | / |
| E-100W-1MODULES-25D | 3 | 23.100 | 65.900 | 16.175 | 13.184 | 31.500 | 0.000 | 24.3 | (C 90, G IMax) | / |
| E-100W-1MODULES-25D | 3 | 23.100 | 65.900 | 16.175 | 9.848 | 31.500 | 0.000 | 23.7 | (C 90, G IMax) | / |
| E-100W-1MODULES-25D | 4 | 79.900 | 65.900 | 16.175 | 51.400 | 34.700 | 0.000 | 20.9 | (C 90, G IMax) | / |
| E-100W-1MODULES-25D | 4 | 79.900 | 65.900 | 16.175 | 99.000 | 51.611 | 0.000 | 34.1 | (C 90, G IMax) | / |
| E-100W-1MODULES-25D | 4 | 79.900 | 65.900 | 16.175 | 63.956 | 31.551 | 0.000 | 23.1 | (C 90, G IMax) | / |
| E-100W-1MODULES-25D | 4 | 79.900 | 65.900 | 16.175 | 53.938 | 31.550 | 0.000 | 20.6 | (C 90, G IMax) | / |
| E-100W-1MODULES-25D | 4 | 79.900 | 65.900 | 16.175 | 68.700 | 57.600 | 0.000 | 49.2 | (C 90, G IMax) | / |
| E-100W-1MODULES-25D | 4 | 79.900 | 65.900 | 16.175 | 96.302 | 31.500 | 0.000 | 23.0 | (C 90, G IMax) | / |
| E-100W-1MODULES-25D | 4 | 79.900 | 65.900 | 16.175 | 99.000 | 32.801 | 0.000 | 22.9 | (C 90, G IMax) | / |
| E-100W-1MODULES-25D | 4 | 79.900 | 65.900 | 16.175 | 69.807 | 31.700 | 0.000 | 24.4 | (C 90, G IMax) | / |
| E-100W-1MODULES-25D | 4 | 79.900 | 65.900 | 16.175 | 99.000 | 58.098 | 0.000 | 38.1 | (C 90, G IMax) | / |
| E-100W-1MODULES-25D | 4 | 79.900 | 65.900 | 16.175 | 99.000 | 38.453 | 0.000 | 25.8 | (C 90, G IMax) | / |
| E-100W-1MODULES-25D | 4 | 79.900 | 65.900 | 16.175 | 88.986 | 58.100 | 0.000 | 53.5 | (C 90, G IMax) | / |
| E-100W-1MODULES-25D | 4 | 79.900 | 65.900 | 16.175 | 51.800 | 41.100 | 0.000 | 23.3 | (C 90, G IMax) | / |
| E-100W-1MODULES-25D | 4 | 79.900 | 65.900 | 16.175 | 51.500 | 62.050 | 0.000 | 29.4 | (C 90, G IMax) | / |
| E-100W-1MODULES-25D | 4 | 79.900 | 65.900 | 16.175 | 52.200 | 56.700 | 0.000 | 29.0 | (C 90, G IMax) | / |
| E-100W-1MODULES-25D | 4 | 79.900 | 65.900 | 16.175 | 99.000 | 62.050 | 0.000 | 39.7 | (C 90, G IMax) | / |
| E-100W-1MODULES-25D | 4 | 79.900 | 65.900 | 16.175 | 51.400 | 49.240 | 0.000 | 26.1 | (C 90, G IMax) | / |
| E-100W-1MODULES-25D | 4 | 79.900 | 65.900 | 16.175 | 98.619 | 31.600 | 0.000 | 22.5 | (C 90, G IMax) | / |
| E-100W-1MODULES-25D | 4 | 79.900 | 65.900 | 16.175 | 51.500 | 53.300 | 0.000 | 27.5 | (C 90, G IMax) | / |
| E-100W-1MODULES-25D | 4 | 79.900 | 65.900 | 16.175 | 99.000 | 44.476 | 0.000 | 29.4 | (C 90, G IMax) | / |
| E-100W-1MODULES-25D | 4 | 79.900 | 65.900 | 16.175 | 58.548 | 31.500 | 0.000 | 21.8 | (C 90, G IMax) | / |
| E-100W-1MODULES-25D | 4 | 79.900 | 65.900 | 16.175 | 51.500 | 31.550 | 0.000 | 19.9 | (C 90, G IMax) | / |
| E-100W-1MODULES-25D | 4 | 79.900 | 65.900 | 16.175 | 85.553 | 31.550 | 0.000 | 24.9 | (C 90, G IMax) | / |



Bearbeiter(in)
Telefon
Fax
e-Mail

Hauptplatz / Sportleuchten (Koordinatenliste)

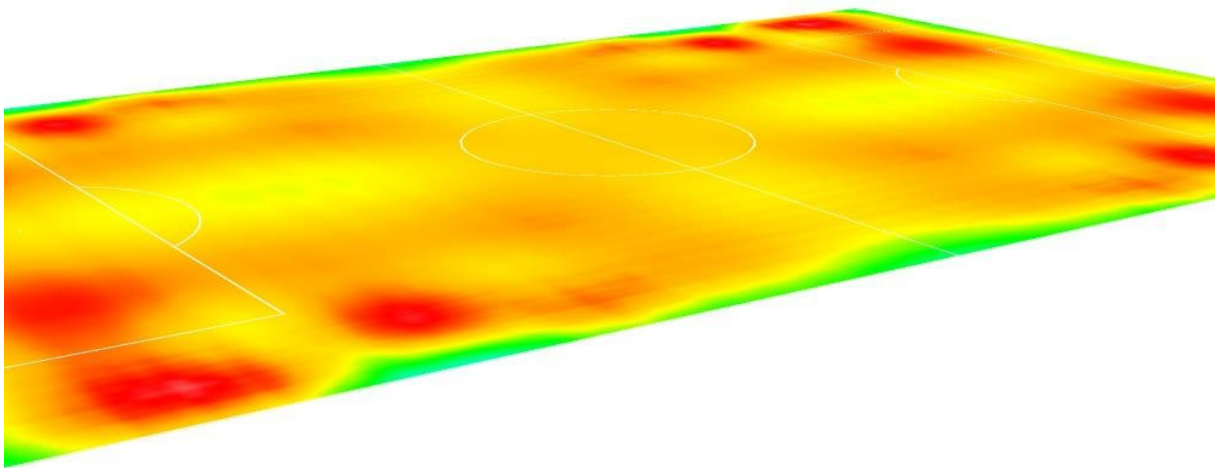
Liste der Sportleuchten

| Leuchte | Index | Position [m] | | | Anstrahlpunkt [m] | | | Anstrahlwinkel [°] | Ausrichtung | Mast |
|---------------------|-------|--------------|--------|--------|-------------------|--------|-------|--------------------|----------------|------|
| | | X | Y | Z | X | Y | Z | | | |
| E-100W-1MODULES-25D | 4 | 79.900 | 65.900 | 16.175 | 80.828 | 31.500 | 0.000 | 25.2 | (C 90, G IMax) | / |
| E-100W-1MODULES-25D | 4 | 79.900 | 65.900 | 16.175 | 74.712 | 31.500 | 0.000 | 24.9 | (C 90, G IMax) | / |
| E-100W-1MODULES-25D | 4 | 79.900 | 65.900 | 16.175 | 77.900 | 31.900 | 0.000 | 25.4 | (C 90, G IMax) | / |
| E-100W-1MODULES-25D | 4 | 79.900 | 65.900 | 16.175 | 61.461 | 31.500 | 0.000 | 22.5 | (C 90, G IMax) | / |
| E-100W-1MODULES-25D | 4 | 79.900 | 65.900 | 16.175 | 99.000 | 34.840 | 0.000 | 23.9 | (C 90, G IMax) | / |
| E-100W-1MODULES-25D | 4 | 79.900 | 65.900 | 16.175 | 78.100 | 53.900 | 0.000 | 53.1 | (C 90, G IMax) | / |
| E-100W-1MODULES-25D | 4 | 79.900 | 65.900 | 16.175 | 89.816 | 31.500 | 0.000 | 24.3 | (C 90, G IMax) | / |
| E-100W-1MODULES-25D | 4 | 79.900 | 65.900 | 16.175 | 93.152 | 31.500 | 0.000 | 23.7 | (C 90, G IMax) | / |



Bearbeiter(in)
Telefon
Fax
e-Mail

Hauptplatz / Falschfarben Rendering



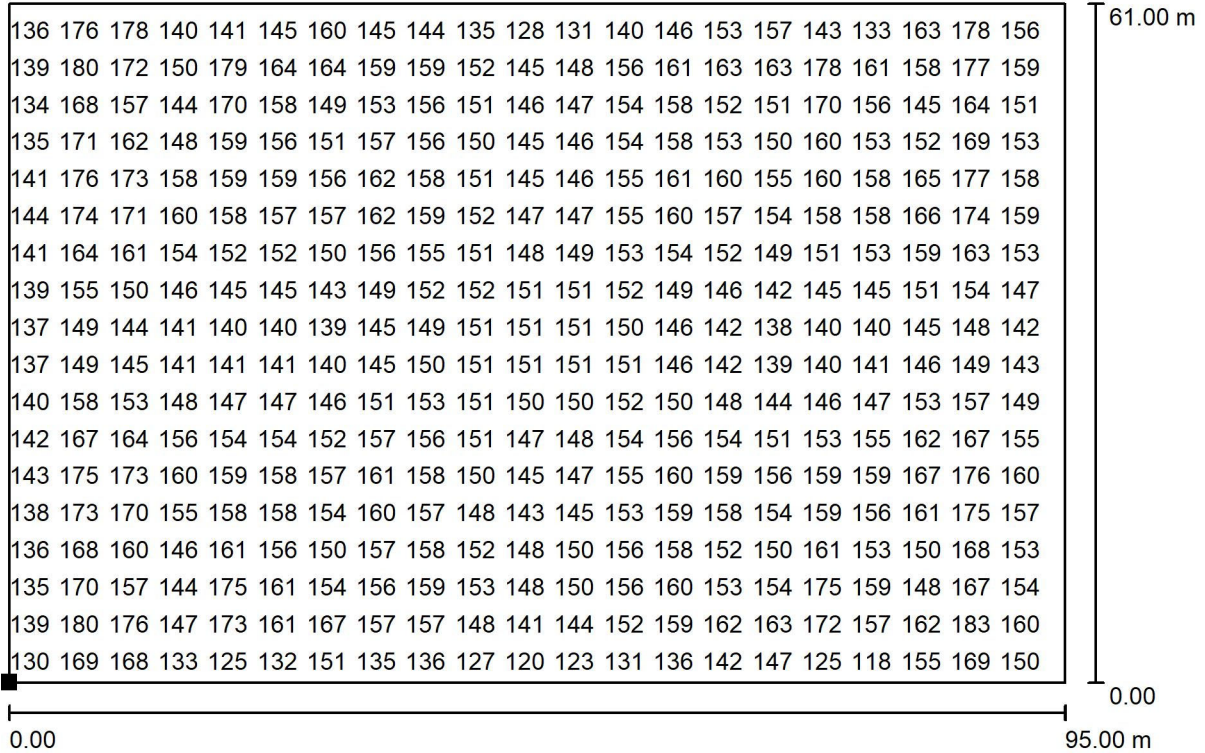
40 60 80 100 120 140 160 180 200

lx



Bearbeiter(in)
 Telefon
 Fax
 e-Mail

Hauptplatz / Ground Element 1 / Surface 1 / Wertegrafik (E)



Werte in Lux, Maßstab 1 : 680

Nicht alle berechneten Werte können dargestellt werden.

Lage der Fläche in der Außenszene:
 Markierter Punkt:
 (4.000 m, 1.050 m, 0.000 m)



Raster: 128 x 128 Punkte

E_m [lx]
152

E_{min} [lx]
104

E_{max} [lx]
189

g_1
0.682

g_2
0.549